

VISIÓN
2030

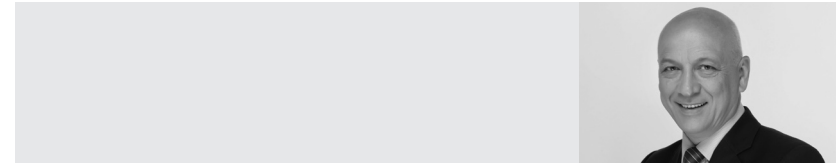
**PLAN
ESTRATÉGICO
PROVINCIAL**
SANTA FE

Works and projects that
guarantee human rights.



**PLAN
ESTRATÉGICO
PROVINCIAL
SANTA FE**

Works and projects that
guarantee human rights.



In December, 2007, Santa Fe citizens started to write a different story. We dared to think about a future for us, to imagine ourselves in the province we want to achieve, to extend our look with the aim of joining today with tomorrow.

This is the way we began, wondering about the dreams we had. And it only took a few meetings for those dreams to build bridges over the territory and turn into concrete words: hospitals, schools, drinking water, routes and so on.

Words that constitute rights. Rights that became projects in an effort to give birth to the Provincial Strategic Plan, a 20-year-long State policy that joins public and private sectors; long standing and new institutions; Santa Fe citizens who produce and work, who study and create, who grow, live and hope.

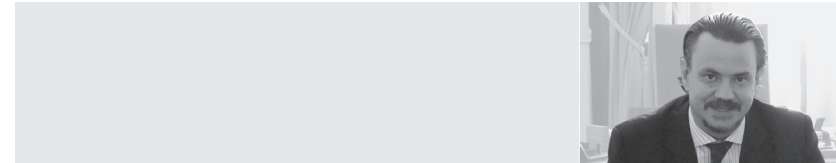
Through this process, we learned to identify ourselves, listen to each other and discuss without fighting. We learned about democracy in the ideal learning environment: the public and collective space. Time, work and conviction made possible many of those initial dreams, since today they are realities beyond question, standing works on the territory, programmes in progress, citizens with more guaranteed rights.

At the end of 2011, when we took charge again of the Government of the Province of Santa Fe, we committed ourselves to go deep into this change. And the update of the Provincial Strategic Plan is an expression of such commitment, and of the dynamic nature we have decided to adopt. Therefore, initial and new projects coexist and combine with the multiple progresses achieved in this Vision 2030, which invites us to keep believing and creating.

This is the reason why we are all included in this Plan: past generations with their fight and values; people from today; and those who will come tomorrow to continue with this work. We are all together, thinking and doing in a Santa Fe that progresses, looks for collective solutions to different problems, learns from mistakes and strengthens from successes.

It makes me really proud to be able to go ahead with governance in a province determined to share paths and hopes, fixed on this direction, encouraged by its strength, will and conviction.

Antonio Bonfatti
Governor of the Province of Santa Fe



In December, 2011, a new government team took charge of the Province of Santa Fe, marking a new stage in the creation of a modern, transparent and close State.

We decided that the regionalization process, which began in December, 2007, should progress towards an increasing integration of those towns and cities that were able to strengthen their development possibilities without leaving their identities aside, nor affecting the diversity which gives distinction to our province. To this aim, we went deep into decentralization, strategic planning and citizen participation, as absolute State policies for the transformation of Santa Fe.

Precisely, the Provincial Strategic Plan Vision 2030 opens up a second stage of strategic planning, focusing on human development and consolidation of social cohesion.

Within this vision, citizens and their rights gain greater importance, and particular emphasis is placed on the power of their capacities to achieve an integral development. Thus, priority is given to the promotion of solidarity, inclusion and equality values, as well as to the projects that direct their efforts towards their achievement; identifying new challenges and approaches that involve every player in the territory when addressing shared problems.

We understand that planning is a continuous process that needs to be redefined when new scenes and new realities appear. Networking is the challenge we take up in this stage with the aim of moving from strategic planning to strategic management. To this end, we need to consolidate this significant change in the political culture of Santa Fe, which began with Citizen Assemblies, the meeting place for public and private sectors to reach an agreement on actions aimed at the materialization of a collective project. Nothing less than the province we all dream.

A handwritten signature in black ink, consisting of a stylized 'R' followed by a series of loops and a horizontal stroke.

Rubén Galassi
Minister of Government and State Reform



**PLAN
 ESTRATÉGICO
 PROVINCIAL
 SANTA FE**

In 2008, we introduced the Provincial Strategic Plan. It emerged as the result of deliberations among Santa Fe citizens, who held Citizen Assemblies and designed strategic projects for their territory, giving priority to those related to physical, infrastructure and connectivity works. Thereafter, we supported the idea of using it as a flexible tool, which needs to be improved in order to give an answer to new challenges, starting from new approaches.

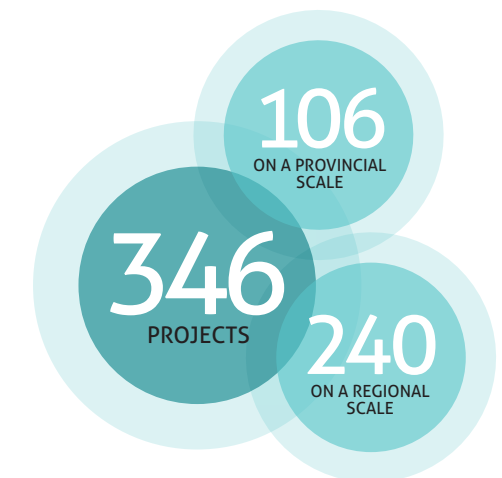
Vision 2030 bets on consolidating the foundations for a Santa Fe more supportive, more inclusive and with equal opportunities for the full exercise of rights. It launches a second generation of strategic planning in Santa Fe, with the aim of contributing to an integral human development. This idea of development broadens the perspective and brings into play the following revolutionary key issues: strengthening of social fabric, consolidation of citizens' ethical and social capital, deepening of citizen participation and deliberation, reform of public administration, and territorial planning.

The emphasis is put on those intangible projects that prioritize relationship management among players and promote creativity among citizens and in the territory. Thus,

broadly speaking, projects related to education, culture, coexistence, citizenship and innovation acquire greater weight within the group of promoted strategies.

The Provincial Strategic Plan Vision 2030 covers the progress of projects, including their impact on the territory and new initiatives. It is integrated by 346 projects, of which 106 are on a provincial scale and 240 are on a regional scale.

These projects are distributed among three strategic lines: Integrated Territory, Social Quality and Development Economics.





Introduction



Santa Fe, a Province of Achievements and Changes

In 2008, an inedited process of political, territorial and socio-institutional changes started to take place in the Province of Santa Fe. It bets on strengthening the particular characteristics of each territory, promoting a close State, and designing and implementing long-term public policies, both for citizens and with citizens.

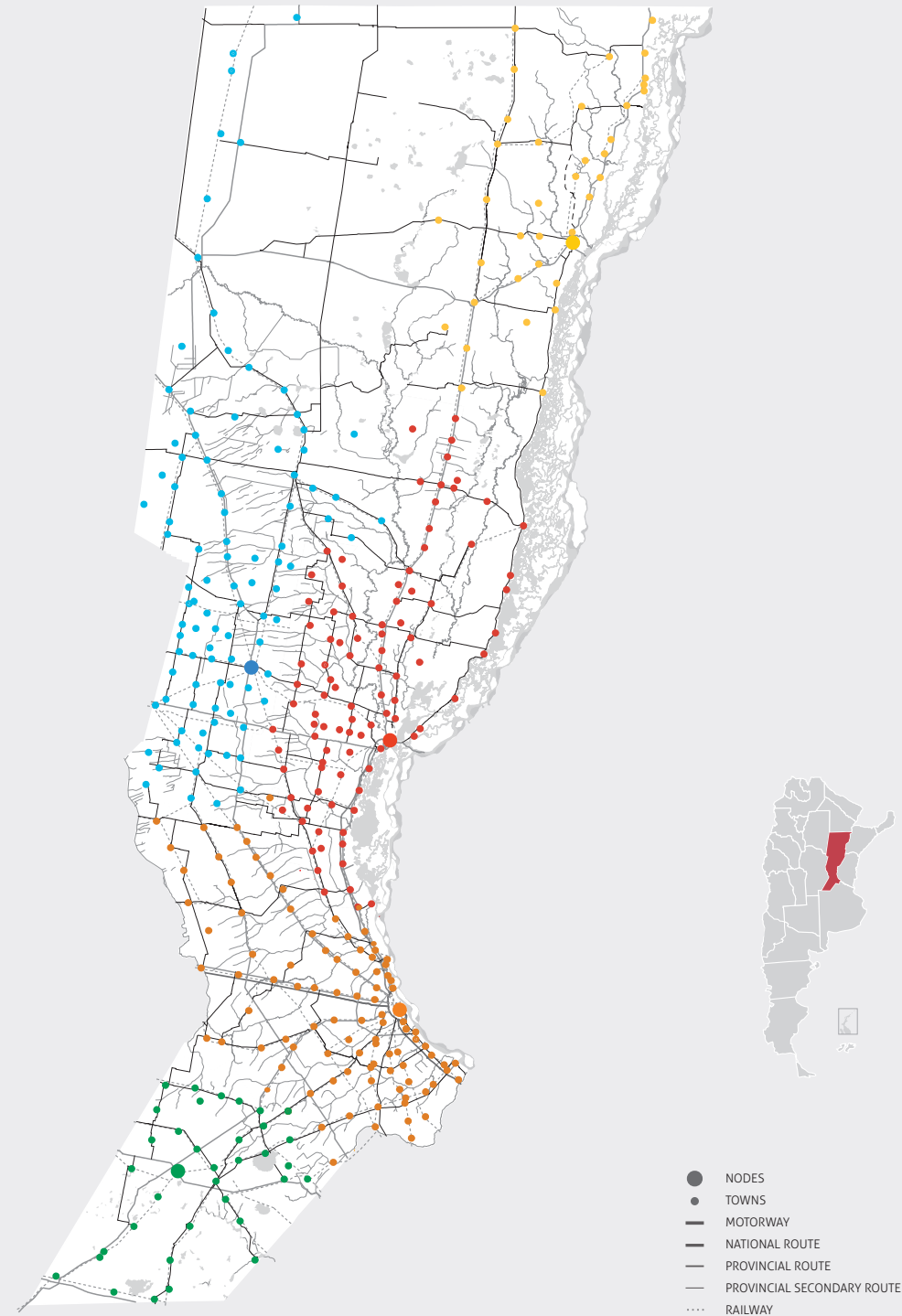
Thus, the process of reform and modernization of the State –anchored in regionalization, decentralization and strategic planning–, emerged as the best answer to the challenge of creating a more supportive, inclusive and integrated society, with higher levels of social cohesion.

Citizen Assemblies became the hallmark and flag of this process. During these meetings, of a massive and regional nature, Santa Fe citizens carried out an evaluation of each region, identified their strengths and weaknesses, and developed medium- and long-term strategic projects. These strategic projects gave life to the Provincial Strategic Plan, a collective, inclusive and multisectorial construction.

The decentralized cooperation is a key contribution to this innovative process. The progress achieved is partly the result of a set of actions sponsored by URB–AL III, a decentralized cooperation programme between the European Union and Latin America.

Within this framework, the Government of the Province of Santa Fe, through the project “Institutional Innovation in Intermediate Governments: Regionalization as a Key Tool for Promoting Local Democracies”, promotes public policies that contribute to social cohesion. It aims at reducing territorial imbalances present in the province; favouring the development of a participatory citizenship and its full exercise of rights; motivating the participation of citizens in public issues; guarantying equal opportunities; and consolidating institutions, their roles and tasks.

With the challenge of consolidating achieved changes and incorporating new initiatives, in this new stage we begin, we broaden our horizons and lay our eyes on Vision 2030. Recently, the province has been consolidating substantial achievements and changes that help improve the lifestyle of Santa Fe citizens, go through the most essential rights, and promote citizenship development through the active participation of citizens in the definition of their future. Santa Fe keeps evolving and the Provincial Strategic Plan Vision 2030 consolidates provincial achievements and changes, while keeps betting on the Santa Fe we all dream.



Characterization of the Provincial Territory

The Province of Santa Fe is located in the East-central part of Argentina. Thanks to its natural resources and production rates, it is one of the most dynamic provinces in the country, with a high potential for the generation of wealth.

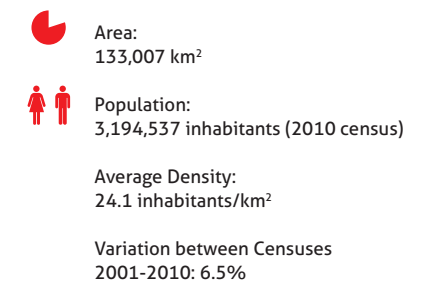
Its population represents the 8% of the national population and is mainly concentrated in the metropolitan areas of Santa Fe and Rosario. The territory of the Province takes up a region characterized by a transition between a warm climate to the North, mild to the South, humid to the East and sub-humid to the West. The benign aspect of the climate enables a great development for agricultural production.

Its strategic location, on the banks of Paraná River, facilitates the exit of products to the world, not only from Santa Fe but also from other provinces. The competitiveness achieved in the port activity chain has enabled a better positioning on the international market, be for its services, loading capacity, logistics infrastructure or management capacity. The biggest port complex related to the agrifood industry is located in Santa Fe and extends from Timbúes to Villa Constitución, where different types of ports coexist: bulk carriers -most of them-, oil carriers, petrochemical carriers, and also containers and loadings in general, as is the case of Rosario Port.

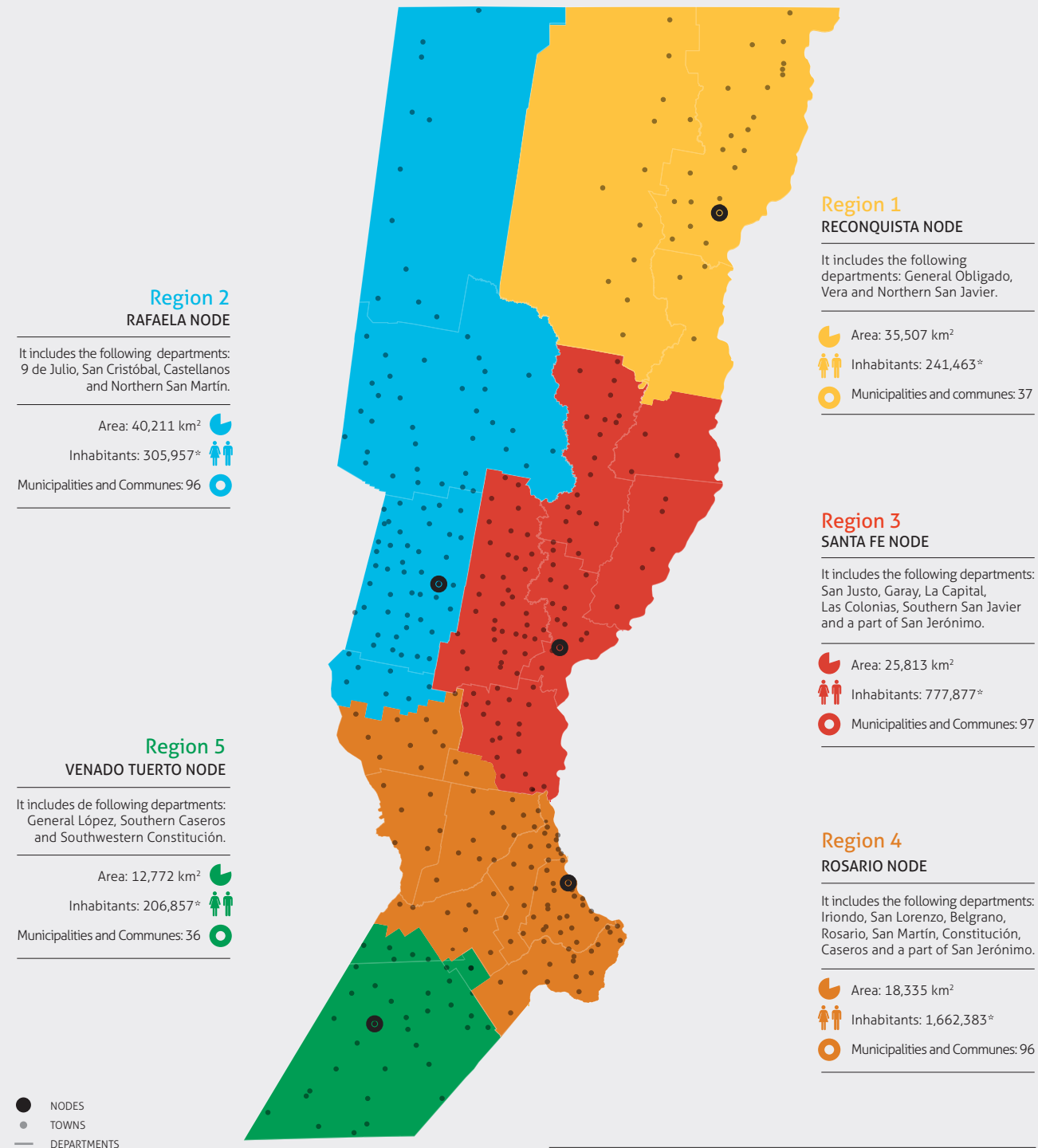
Santa Fe is part of the most productive region of the country and stands for approximately 20% of the total sown area at a national scale. Thus, it is in the third place in the production of oilseeds and in the second place in the production of grains.

The main crops of the region are soybean, corn, wheat, sunflower and, to a lesser extent, sorghum, rice and cotton. Southern Santa Fe yields the best output and provides 45% of the agricultural production value. Stockbreeding is another important activity that mostly includes the activities of cattle raising and wintering and milk production. The extensive dairy area in Santa Fe, located in the Central region, stands for 30% of the provincial agricultural production value and is the most important dairy production region in the country.

The Gross Geographic Product of the Province of Santa Fe stands for 8.3% of the Gross National Product, being the fourth most important economy of the country in terms of product. The strength of the province lies in the well-diversified production it has. Santa Fe is in the second place in the ranking of exporting provinces, right after Buenos Aires, generating approximately 21% of the total value exported by the country.



Source: Santa Fe en Cifras - IPEC



Regionalization, a Strategy to Integrate and Bring Close

“Five regions, one province” is the phrase that best summarizes the vision of the territorial regionalization policy, which began in the year 2008.

Within the framework of an unique project related to territorial change, regionalization arises as a strategy to integrate territories that were previously disconnected and fragmented. It consolidates their particular characteristics and brings the State closer to citizens and to different local players, thus establishing a new form of government in the Province of Santa Fe.

Regionalization sees the territory as a big network that interconnects different local players; social, economic, productive and political activities; and cultural and natural heritage sites, that need to be articulated and managed from a short distance. It also sees regions as symbolic spaces and flexible structures that rebuild itineraries, links, paths, stories and values, and where territory and culture provide the corresponding anchoring for their localization. Each one of them has independent nodes dedicated to the distribution and redistribution of capacities, information and resources.

Also, regions represent the appropriate scene where to deploy strategic planning, citizen participation and provincial decentralization under the challenge of combining the universal idea of citizenship with the recovery of what is local and regional.

Dialogue is the key tool to carry out this project, reach agreements of citizenship legitimacy, and materialize the consensus principle between State, Market and Civil Society.

The regional strategic plan becomes the shared framework of reference that will generate new institutional spaces where to meet, debate and exchange words with the aim of reaching different agreements.

From Planning to Strategic Management

Strategic planning is the tool used for research, citizen participation and collective decision making from which to address the idea of territorial, social and institutional change and transformation in the Province of Santa Fe.

The step towards strategic management, as an overcoming instance and an inseparable part from planning, promotes and guides management among players with the ability to transform the territory, determine shared provincial strategies, work synergistically, motivate driving and structuring projects, and share common criteria about collective action.

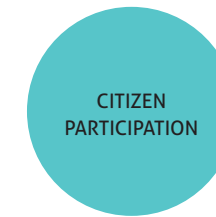
The new proposed challenges to move from strategic planning to strategic management are: to link the Strategic Plan with the provincial budget with the aim of enabling an articulated management of public budget policies, to consolidate the multi-level governance, and to move forward the creation of indicators on a two-dimensional work. On the one hand, to develop management indicators to consider and assess the progress of strategic projects and, on the other hand, to create regional indicators to weigh up the impact of projects on the territory and the increase of social cohesion.



Institutional Innovation and New Practices

When talking about institutional innovation, we mean the implementation of original mechanisms to offer solutions to public issues. As a practice, it challenges customs and habits that appear impossible to modify; and imagines and creates overcoming actions to drive opportunities with the aim of creating new scenes and new realities.

Institutional Devices Implemented since 2008



- » Citizen Assemblies
- » Microregional Meetings
- » Youth Forums
- » Indigenous People's Forums



- » Training Sessions for Local Governments
- » "Santa Fe, Network of Cities" Congress
- » Topic-Based Seminars
- » Training Sessions for Facilitators
- » Network of Youth's Municipalities and Communes



- WITH INSTITUTIONS AND ORGANIZATIONS OF CIVIL SOCIETY
- » Regional Strategic Planning Councils
- INSIDE GOVERNMENT
- » Interministerial Conferences
- » Interministerial Follow-up Commission
- » Youth's Cabinet



Provincial Strategic Plan

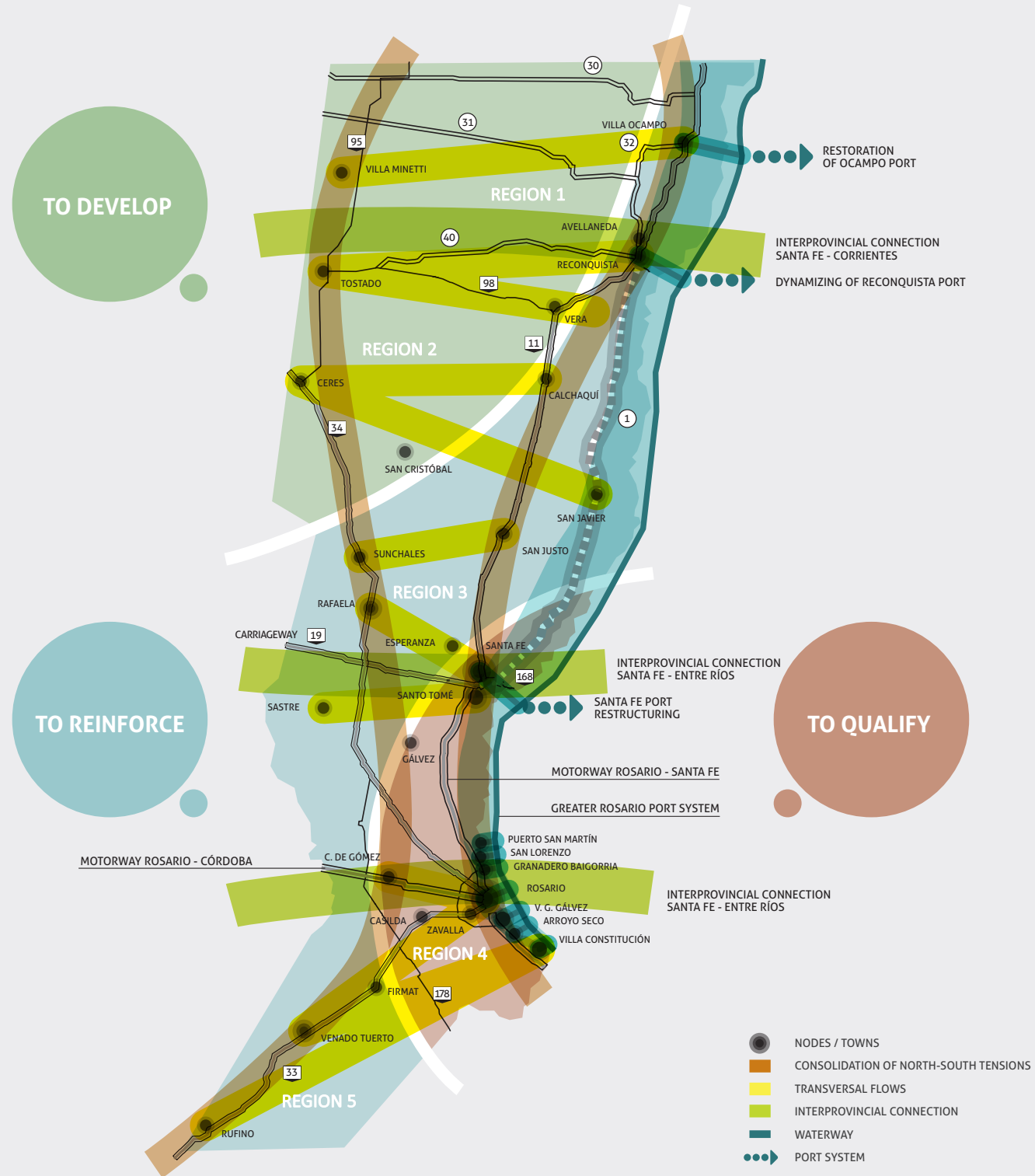
Vision 2030



To offer equal opportunities for the full exercise of rights. **To appreciate gender and diversity and to respect minorities.** To give priority to working with children, young people and elderly people. **To offer universal access to public goods.** To offer access to land and habitat. **To overcome poverty and vulnerability.** To strengthen citizen participation and dialogue. **To develop a sustainable development and to care for the environment.** To achieve territorial and interregional balance. **To offer access to transparent and reliable public information.**

Values

The word value refers to the sense and meaning we give to words, actions and works. It is the strength that encourages us towards the conquest of big projects; it is the strength that nourishes our efforts towards the collective destination we all wish as Santa Fe citizens.



Prospective Vision

Santa Fe, an integrated and supportive province, that shows territorial balance, social quality and economic development based on the dynamic articulation between State, Market and Civil Society. A network of productive, creative and innovative cities that connect and develop. A province projected to the world, which consolidates its identity in the diversity.

A territory where the concepts of voice, participation, dialogue and respect make sense. A place where its inhabitants have equal opportunities to exercise their rights in relation to education, health, culture, proper labour and drinking water.

A context where the habitat, the protection of natural resources and the enjoyment of public spaces contribute to live in a safe community with a healthy environment.

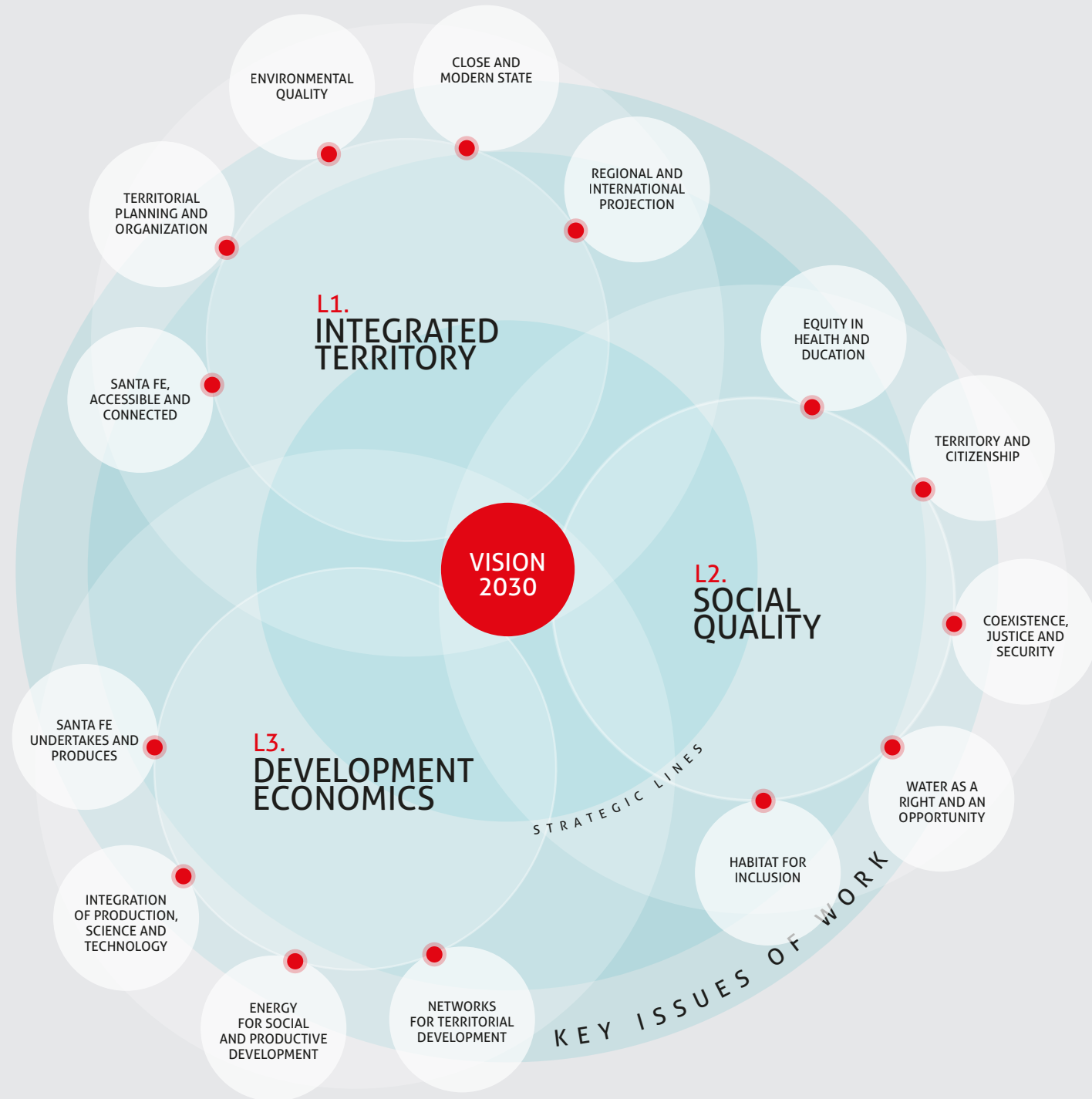


Strategic Lines

Integrated Territory, Social Quality and Development Economics are the strategic lines that organize planning and guide action under the framework of an integral approach of the territory, its problems and potentialities.

Proposals made in 2008 continue reinforcing the vision the province wish to achieve.

Each line includes key issues of work that gather and articulate different projects of a similar nature. The key issues of work synthesize what was learned along the well-trodden path during the lasts years and give expression to the citizen initiatives that emerged in this new stage of participatory strategic planning.



STRATEGIC LINES

L1 INTEGRATED TERRITORY

Integrated Territory means the space where social, political and economic life takes place, both individually and collectively.

L2 SOCIAL QUALITY

The concept of Social Quality refers to the possibility citizens have of participating in the social, political and economic life of their communities, under conditions that improve their welfare and individual potential.

L3 DEVELOPMENT ECONOMICS

The Development Economics line proposes a strategy that aims at capitalizing and optimizing existing resources through the use of society's knowledge, capacity and talent. It aims at achieving an integrated development that respond to economic and social indicators.

KEY ISSUES OF WORK

Santa Fe, Accessible and Connected

It aims at driving along the territory; getting connected through motorways, routes and paths; and moving around in order to grow, evolve and progress. It involves connection and communication channels through ports, airports, railways, and information and communication technologies.

Territorial Planning and Organization

It includes projects aimed at organizing territorial growth and development, taking into account its realities and potentialities. It bets on articulating joint actions, both public-public and public-private, that result in better standards of living and contribute to a sustainable development.

Environmental Quality

It includes projects aimed at the responsible use of natural resources, conservation of physical environment, and reduction of harmful impact of productive activities on environmental health.

Close and Modern State

It includes projects that give expression to the idea of a close State. It bets on consolidating new forms of "doing" and creating new administrative routines –more efficient, responsive and transparent– through the use of new information and communication technologies.

Regional and International Projection

It aims at projecting the province on the region and the world. It includes integration and cooperation policies that promote economic, social and cultural development at the international level.

Equity in Health and Education

It gives priority to health and education as equalizers of opportunities, promoters of social cohesion and driving forces of human development. It aims at strengthening and consolidating public schools as well as an efficient and high quality health system.

Territory and Citizenship

It gives a hierarchical structure to culture and to the social construction of innovation, allowing the involvement of citizens and the encouragement of imagination, creation and knowledge recreation.

Coexistence, Justice and Security

It involves a comprehensive approach to public security. It considers the creation of risk-free social environments that help to overcome vulnerability conditions and recover social fabric. It also involves the reduction of violent conflicts and the respect for law enforcement, restoring not only the sense but also the practice of both individual and collective coexistence.

Water as a Right and an Opportunity

It aims at protecting provincial water resources, ensuring water access and enjoyment. Water is a basic human right and a resource that needs to be looked after, enjoyed and controlled.

Habitat for Inclusion

Broadly and comprehensively speaking, habitat means the area where we live, work, enjoy, walk and build relationships. Access to land and its secure ownership are priority actions related to the construction of the habitat and should become public policies.

Santa Fe Undertakes and Produces

It reinforces the productive economic framework, with a sustainable conception, through the promotion of regional productions. It not only consolidates existing value chains, but also empowers new ones, encouraging local production, the creation of new workstations and the positioning of products on the market.

Integration of Production, Science and Technology

It bets on adding value to productions in order to generate territorial competitiveness; providing support to entrepreneurs and favouring innovation processes and social appropriation of knowledge; and consolidating learning dynamics through the strengthening of relationships between the productive, academic, state and private sectors.

Energy for Social and Productive Development

Conceiving energy as a basic resource for the comprehensive development of the territory, new efficient production and distribution systems of traditional and renewable energy are encouraged. Also, its rational and responsible use is promoted, fostering production conditions that guarantee the supply of such resource both at present and in the future.

Networks for Territorial Development

Networks enable interaction between public and private actors, exchanging experiences in pursuit of equity in territorial development. They create synergy and generate a space for dialogue and empowerment, strengthening democracy and building power in a decentralized way.

Strategic Projects

Regional and Provincial

L1 INTEGRATED TERRITORY

SANTA FE, ACCESSIBLE AND CONNECTED

- › **Road Infrastructure**
 - › National Route 11 carriageway
 - › Consolidation of transversal routes
 - › Consolidation of Provincial Route 1 and National Route 11
 - › Consolidation of Provincial Routes 3 and 96s
 - › Interprovincial connection Santa Fe - Corrientes
- › **Tertiary Road Network**
- › **Port and Fluvial Development**
 - › Restoration of Ocampo Port and dynamizing of Reconquista Port
- › **Railway Restructuring**
 - › Railway Los Amores - Cañada Ombú
- › **Commercial Air Activity and Airport System**
 - › Reactivation of Reconquista Airport
- › **Santa Fe and the Waterway**
- › **Multimodal Transport System**
- › **Communication Technologies**
- › **Santa Fe Radio and Television**
- › **Santa Fe Signal**

TERRITORIAL PLANNING AND ORGANIZATION

- › **Urban Planning and Land Policies**
- › **Environmental and Productive Territorial Planning**
- › **Territorial Hydrological Planning**
- › **Land Bank**
- › **IDESF Geographic Information System**

ENVIRONMENTAL QUALITY

- › **Sanitation Master Plan**
- › **Integral Management of Urban Solid Waste**
- › **Management of Protected Flora, Fauna and Natural Areas**
 - › Integral management plan of Bajos Submeridionales
 - › Management plan of RAMSAR Jaaukanigás site
 - › Management plan of native forests
- › **Effluent Control and Surface Course Sanitation**
 - › Recovery plan of Del Rey Stream
- › **Control of the Use of Phytosanitary Products**
- › **Cleaner Production**
- › **Electronic Waste Treatment**
- › **Facilitators and People Responsible of the Environment**

CLOSE AND MODERN STATE

- › **Regionalization**
 - › Reconquista Node Civic Centre - School of Entrepreneurs
- › **Decentralization Master Plan**
 - › Citizen Service Centre - Region 1 Civic Centre
- › **Policies for the Integral Management of Public Officers**
- › **Modernization of the Technological Infrastructure**
- › **Electronic Citizen Service and Government**
- › **Innovation Technologies in Public Administration**
- › **Integration and Digitizing of General Registries**
- › **Implementation Framework for the Use of Free Technologies**
- › **Communication Within Reach of Citizens**
- › **Development of Local Autonomies**

REGIONAL AND INTERNATIONAL PROJECTION

- › **Regional Integration: Central Region**
- › **Regional Integration: CRECENEA - CODESUL- MERCOSUR**
- › **International Networks and Cooperation**
 - › Promotion of the international integration of the region
- › **Inclusion of Agro-Energy in the Agro-Economic Hubs of Brazil and Argentina**

- › **Provincial project**
- › **Regional project**

L2 SOCIAL QUALITY

EQUITY IN HEALTH AND EDUCATION

- › **High Quality Public Education**
 - › Keeping schools as educational spaces
- › **Schools of Arts**
 - › Audiovisual school - Reconquista
- › **Public Libraries**
- › **Integrated Health System**
 - › Construction of Regional Hospital - Reconquista
 - › Las Toscas Hospital
 - › Construction of Health Centres
- › **Health Emergency System**
- › **Technology Innovation in Public Health**
- › **Health Promotion**
- › **Public Production of Medicines**
- › **Integral Health Policies. Sociosubjective Approach**
- › **Food Safety and Sovereignty**

TERRITORY AND CITIZENSHIP

- › **Building Gender Equality**
- › **Children's Province**
- › **Youth's Territory**
- › **Elderly Well Being Minded Inclusion**
- › **Accessibility for People with Disabilities**
- › **Sports Development**
- › **Provincial Network of Inclusive Plant Nurseries**
- › **Cultural Buildings and Spaces**
 - › Territory for meetings
 - › "El Lucero" Cultural Workshop. Childhood in motion
 - › Memoirs, museums and archaeological sites - La Forestal
 - › Parque la Estación cultural factory - Reconquista
- › **Itinerant Programmes**
 - › Willing, Believing, Creating: cultures in motion
- › **Social Appropriation of Science, Technology and Innovation**

COEXISTENCE, JUSTICE AND SECURITY

- › **Safe Territory and Communities**
- › **Proper and Inclusive Work**
 - › Prevention and removal of child and teenage labour
- › **Public Health Strategies for the Prevention of Child and Teenage Labour**
- › **Reform of the Legal System**
 - › Regional Centre of Criminal Justice
 - › Regional Offices of Justice
 - › Legal Assistance Centre
- › **Dejudicialization of Interpersonal Conflicts**
- › **Prevention Policies in Security**
- › **Modernization of the Structure of the Police Force**
- › **New Model of the Correctional System**
 - › Region 1 correctional system
- › **Road Safety Agency**
- › **Technologies Applied to Citizen Security**

WATER AS A RIGHT AND AN OPPORTUNITY

- › **Drinking Water Supply System**
 - › Water lines Reconquista and Northern Santa Fe
- › **Integral Management of Water Resources**
- › **Drainage and Retention Programme**
- › **Assessment Programme and Water Risk Control**
- › **Water Regional Observatory**

HABITAT FOR INCLUSION

- › **My Land, My Home**
 - › Housing programme
- › **Habitat Santa Fe**
- › **Safe Water and Electricity**
- › **Land Titling and Regularization**
- › **Historic Restitution of the Territory**
 - › Regional rooting

L3 DEVELOPMENT ECONOMICS

SANTA FE UNDERTAKES AND PRODUCES

- › **Promotion and Consolidation of Value Chains**
 - › Promotion of sugar cane value chain
 - › Promotion of cotton activity
 - › Experimental Operating Centre - Las Gamas Farm
 - › Forest Operating Centre - Santa Felicia
 - › Fish fauna development and fish farming system
 - › Irrigation of Santa Fe sugar cane area
 - › Irrigation of Avellaneda district
- › **Santa Fe Extension Network**
- › **Santa Fe Exports Value**
- › **Social Economy**
- › **Tourism Management System**
 - › Regional Tourism Development
- › **Cultural Factories and Industries**
- › **Domestic Market Integration and Development**
 - › Regional Productive Platform
- › **Labour Observatory**
- › **Public System of Labour Mediation**
- › **Integrated Policy of Fishery Resources**
- › **Promotion and Financing Tools of Development**
 - › Development of alternative production systems

INTEGRATION OF PRODUCTION, SCIENCE AND TECHNOLOGY

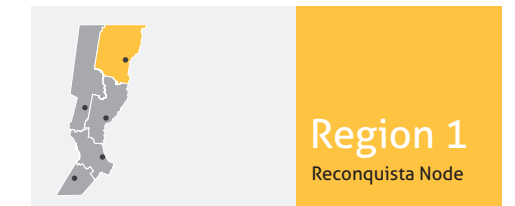
- › **Santa Fe Innovates: R+D+i Integration (Research, Development and Innovation)**
 - › Consolidation of the Regional Industrial Technopole
- › **Provincial Agency of Science, Technology and Innovation**
- › **Santa Fe Undertakes**
- › **Regional Hallmark: Designation of Origin**

ENERGY FOR SOCIAL AND PRODUCTIVE DEVELOPMENT

- › **Integrated Development of the Electric Power System**
 - › Increase of electric power generation and finalization of electric power ring
- › **Cogeneration of Energy**
 - › Cogeneration of biomass
- › **Gas Network System**
 - › Gas pipeline of Northeast Argentina
- › **Generation of Alternative Energies**
 - › Development of bioenergetic systems
- › **Wind Resource Assessment**
- › **Integral Management of Used Vegetable Oils**
- › **Generation of Biogas**
- › **Solar Energy Exploitation**
 - › Solar energy plant - Villa Ocampo
- › **Water Energy Supply in Plain Rivers**

NETWORKS FOR TERRITORIAL DEVELOPMENT

- › **Consolidation of Public-Private Territorial Associations**
- › **Promotion of Associativism, Cooperativism and Entrepreneurship**
 - › Consolidation of Regional Development Agencies and Associations
- › **Promotion of Corporate Social Responsibility**
- › **Fiscal Control of Cooperative Entities and Mutual Associations**
- › **Promotion of Intermunicipal Associations**
 - › Consolidation of Greater Avellaneda - Reconquista



L1 INTEGRATED TERRITORY

SANTA FE, ACCESSIBLE AND CONNECTED
<ul style="list-style-type: none"> › Road Infrastructure <ul style="list-style-type: none"> » National Route 34 carriageway » Provincial Route 70 carriageway » Consolidation of transversal routes » Consolidation of Provincial Routes 2 and 13 » Consolidation of provincial road network › Tertiary Road Network › Port and Fluvial Development › Railway Restructuring › Commercial Air Activity and Airport System <ul style="list-style-type: none"> » Consolidation of Rafaela Airport › Santa Fe and the Waterway › Multimodal Transport System › Communication Technologies › Santa Fe Radio and Television › Santa Fe Signal
TERRITORIAL PLANNING AND ORGANIZATION
<ul style="list-style-type: none"> › Urban Planning and Land Policies › Environmental and Productive Territorial Planning › Territorial Hydrological Planning › Land Bank › IDESF Geographic Information System
ENVIRONMENTAL QUALITY
<ul style="list-style-type: none"> › Sanitation Master Plan › Integral Management of Urban Solid Waste › Management of Protected Flora, Fauna and Natural Areas <ul style="list-style-type: none"> » Integral management plan of Bajos Submeridionales › Effluent Control and Surface Course Sanitation › Control of the Use of Phytosanitary Products › Cleaner Production › Electronic Waste Treatment › Facilitators and People Responsible of the Environment
CLOSE AND MODERN STATE
<ul style="list-style-type: none"> › Regionalization <ul style="list-style-type: none"> » Rafaela Node Civic Centre - School of Productive Development › Decentralization Master Plan <ul style="list-style-type: none"> » Citizen Service Centre - Region 2 Civic Centre › Policies for the Integral Management of Public Officers › Modernization of the Technological Infrastructure › Electronic Citizen Service and Government › Innovation Technologies in Public Administration › Integration and Digitizing of General Registries <ul style="list-style-type: none"> » Creation of General Registry › Implementation Framework for the Use of Free Technologies › Communication Within Reach of Citizens › Development of Local Autonomies
REGIONAL AND INTERNATIONAL PROJECTION
<ul style="list-style-type: none"> › Regional Integration: Central Region › Regional Integration: CRECENEA - CODESUL- MERCOSUR › International Networks and Cooperation <ul style="list-style-type: none"> » Promotion of the international integration of the region › Inclusion of Agro-Energy in the Agro-Economic Hubs of Brazil and Argentina

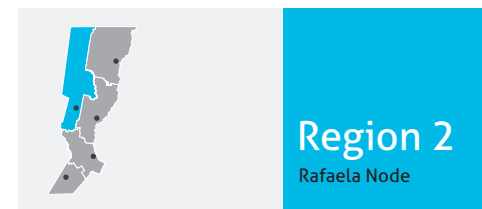
- › **Provincial project**
- » Regional project

L2 SOCIAL QUALITY

EQUITY IN HEALTH AND EDUCATION
<ul style="list-style-type: none"> › High Quality Public Education <ul style="list-style-type: none"> » Keeping schools as educational spaces › Schools of Arts › Public Libraries › Integrated Health System <ul style="list-style-type: none"> » Construction of Regional Hospital - Rafaela » Construction of medium complexity hospital - Ceres » Construction of Health Centres › Health Emergency System › Technology Innovation in Public Health › Health Promotion › Public Production of Medicines › Integral Health Policies. Sociosubjective Approach › Food Safety and Sovereignty
TERRITORY AND CITIZENSHIP
<ul style="list-style-type: none"> › Building Gender Equality › Children's Province › Youth's Territory › Elderly Well Being Minded Inclusion › Accessibility for People with Disabilities › Sports Development › Provincial Network of Inclusive Plant Nurseries › Cultural Buildings and Spaces <ul style="list-style-type: none"> » Territory for meetings » "El Lucero" Cultural Workshop. Childhood in motion » Memoirs, museums and archaeological sites » Cultural Factory - Rafaela › Itinerant Programmes <ul style="list-style-type: none"> » Willing, Believing, Creating: cultures in motion › Social Appropriation of Science, Technology and Innovation
COEXISTENCE, JUSTICE AND SECURITY
<ul style="list-style-type: none"> › Safe Territory and Communities › Proper and Inclusive Work › Public Health Strategies for the Prevention of Child and Teenage Labour › Reform of the Legal System <ul style="list-style-type: none"> » Regional Centre of Criminal Justice » Regional Offices of Justice » Legal Assistance Centre › Dejudicialization of Interpersonal Conflicts › Prevention Policies in Security › Modernization of the Structure of the Police Force › New Model of the Correctional System <ul style="list-style-type: none"> » Region 2 correctional system › Road Safety Agency › Technologies Applied to Citizen Security
WATER AS A RIGHT AND AN OPPORTUNITY
<ul style="list-style-type: none"> › Drinking Water Supply System <ul style="list-style-type: none"> » Water lines De La Integración and Desvío Arijón » Diversion dam in Salado River - Tostado › Integral Management of Water Resources › Drainage and Retention Programme <ul style="list-style-type: none"> » Slow-down lagoons in Rafaela › Assessment Programme and Water Risk Control › Water Regional Observatory
HABITAT FOR INCLUSION
<ul style="list-style-type: none"> › My Land, My Home <ul style="list-style-type: none"> » Housing programme › Habitat Santa Fe › Safe Water and Electricity › Land Titling and Regularization › Historic Restitution of the Territory

L3 DEVELOPMENT ECONOMICS

SANTA FE UNDERTAKES AND PRODUCES
<ul style="list-style-type: none"> › Promotion and Consolidation of Value Chains <ul style="list-style-type: none"> » Dairy development » Livestock development » Forest development » Promotion of agrifood value chain » Water supply systems for livestock in Northern Santa Fe › Santa Fe Extension Network › Santa Fe Exports Value › Social Economy › Tourism Management System <ul style="list-style-type: none"> » Regional Tourism Development › Cultural Factories and Industries <ul style="list-style-type: none"> » Audiovisual Production Centre - San Cristóbal › Domestic Market Integration and Development <ul style="list-style-type: none"> » Regional Productive Platform › Labour Observatory › Public System of Labour Mediation › Integrated Policy of Fishery Resources › Promotion and Financing Tools of Development › Development of alternative production systems
INTEGRATION OF PRODUCTION, SCIENCE AND TECHNOLOGY
<ul style="list-style-type: none"> › Santa Fe Innovates: R+D+i Integration (Research, Development and Innovation) › Provincial Agency of Science, Technology and Innovation › Santa Fe Undertakes › Regional Hallmark: Designation of Origin
ENERGY FOR SOCIAL AND PRODUCTIVE DEVELOPMENT
<ul style="list-style-type: none"> › Integrated Development of the Electric Power System <ul style="list-style-type: none"> » Finalization of electric power ring Tostado - Romang › Cogeneration of Energy <ul style="list-style-type: none"> » Cogeneration of biomass › Gas Network System <ul style="list-style-type: none"> » Gas pipeline of Northeast Argentina › Generation of Alternative Energies › Wind Resource Assessment <ul style="list-style-type: none"> » Wind energy generation park › Integral Management of Used Vegetable Oils › Generation of Biogas <ul style="list-style-type: none"> » Generation of biogas - Rafaela and Zenón Pereyra › Solar Energy Exploitation <ul style="list-style-type: none"> » Solar energy plant - Tostado › Water Energy Supply in Plain Rivers
NETWORKS FOR TERRITORIAL DEVELOPMENT
<ul style="list-style-type: none"> › Consolidation of Public-Private Territorial Associations › Promotion of Associativism, Cooperativism and Entrepreneurship <ul style="list-style-type: none"> » Consolidation of Regional Development Agencies and Associations › Promotion of Corporate Social Responsibility › Fiscal Control of Cooperative Entities and Mutual Associations › Promotion of Intermunicipal Associations



Region 2
Rafaela Node

L1 INTEGRATED TERRITORY

SANTA FE, ACCESSIBLE AND CONNECTED
<ul style="list-style-type: none"> › Road Infrastructure <ul style="list-style-type: none"> » National Route 11 carriageway » Provincial Route 70 carriageway » Consolidation of Provincial Route 1 » Interprovincial connection Santa Fe - Paraná » New road connection Santa Fe - Santo Tomé › Tertiary Road Network › Port and Fluvial Development <ul style="list-style-type: none"> » Santa Fe Port restructuring › Railway Restructuring <ul style="list-style-type: none"> » Railway system restructuring in the metropolitan area of Santa Fe and the region › Commercial Air Activity and Airport System <ul style="list-style-type: none"> » Reactivation of freight flow in Sauce Viejo Airport › Santa Fe and the Waterway › Multimodal Transport System › Communication Technologies › Santa Fe Radio and Television › Santa Fe Signal
TERRITORIAL PLANNING AND ORGANIZATION
<ul style="list-style-type: none"> › Urban Planning and Land Policies › Environmental and Productive Territorial Organization › Territorial Hydrological Planning › Land Bank › IDESF Geographic Information System
ENVIRONMENTAL QUALITY
<ul style="list-style-type: none"> › Sanitation Master Plan › Integral Management of Urban Solid Waste › Management of Protected Flora, Fauna and Natural Areas <ul style="list-style-type: none"> » Management plan of islands and delta › Effluent Control and Surface Course Sanitation › Control of the Use of Phytosanitary Products › Cleaner Production › Electronic Waste Treatment › Facilitators and People Responsible of the Environment
CLOSE AND MODERN STATE
<ul style="list-style-type: none"> › Regionalization <ul style="list-style-type: none"> » Recreo Ground Civic Centre - School of Government › Decentralization Master Plan <ul style="list-style-type: none"> » Citizen Service Centre - Region 3 Civic Centre › Policies for the Integral Management of Public Officers › Modernization of the Technological Infrastructure › Electronic Citizen Service and Government › Innovation Technologies in Public Administration › Integration and Digitizing of General Registries › Implementation Framework for the Use of Free Technologies › Communication Within Reach of Citizens › Development of Local Autonomies
REGIONAL AND INTERNATIONAL PROJECTION
<ul style="list-style-type: none"> › Regional Integration: Central Region › Regional Integration: CRECENEA - CODESUL- MERCOSUR › International Networks and Cooperation <ul style="list-style-type: none"> » Internationalization of R+D+i (Research, Development and Innovation) › Inclusion of Agro-Energy in the Agro-Economic Hubs of Brazil and Argentina

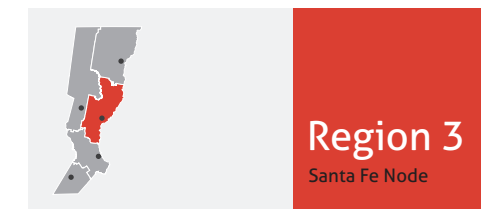
- › **Provincial project**
- » Regional project

L2 SOCIAL QUALITY

EQUITY IN HEALTH AND EDUCATION
<ul style="list-style-type: none"> › High Quality Public Education <ul style="list-style-type: none"> » The ideal place for interacting and learning › Schools of Arts › Public Libraries › Integrated Health System <ul style="list-style-type: none"> » New Regional Hospital - Santa Fe (Iturraspe Hospital) » Construction of Outpatient Medical Specialties Centre (CEMAFE) » New medium complexity hospital - Coronda » Construction of Health Centres › Health Emergency System › Technology Innovation in Public Health › Health Promotion › Public Production of Medicines <ul style="list-style-type: none"> » Industrial Pharmaceutical Laboratory (IPL) › Integral Health Policies. Sociosubjective Approach › Food Safety and Sovereignty
TERRITORY AND CITIZENSHIP
<ul style="list-style-type: none"> › Building Gender Equality › Children's Province › Youth's Territory › Elderly Well Being Minded Inclusion › Accessibility for People with Disabilities › Sports Development › Provincial Network of Inclusive Plant Nurseries › Cultural Buildings and Spaces <ul style="list-style-type: none"> » Territory for meetings » "El Lucero" Cultural Workshop. Childhood in motion » Memoirs, museums and archaeological sites - Cayastá » House of Culture » Federal Park - Santa Fe » Franchino Mill - Cultural Factory › Itinerant Programmes <ul style="list-style-type: none"> » Willing, Believing, Creating: cultures in motion › Social Appropriation of Science, Technology and Innovation
COEXISTENCE, JUSTICE AND SECURITY
<ul style="list-style-type: none"> › Safe Territory and Communities › Proper and Inclusive Work <ul style="list-style-type: none"> » Prevention and removal of child domestic rural labour › Public Health Strategies for the Prevention of Child and Teenage Labour › Reform of the Legal System <ul style="list-style-type: none"> » Regional Centre of Criminal Justice in Santa Fe » Regional Offices of Justice » Legal Assistance Centre » Closed establishment for Juvenile Criminal Justice › Dejudicialization of Interpersonal Conflicts › Prevention Policies in Security › Modernization of the Structure of the Police Force › New Model of the Correctional System <ul style="list-style-type: none"> » Region 3 correctional system › Road Safety Agency › Technologies Applied to Citizen Security
WATER AS A RIGHT AND AN OPPORTUNITY
<ul style="list-style-type: none"> › Drinking Water Supply System <ul style="list-style-type: none"> » Water lines Desvío Arijón, Riverside, San Javier, Helvecia and Coronda River. › Integral Management of Water Resources › Drainage and Retention Programme <ul style="list-style-type: none"> » Coastal defence in "Santa Fe La Vieja" archaeological site - Cayastá › Assessment Programme and Water Risk Control › Water Regional Observatory
HABITAT FOR INCLUSION
<ul style="list-style-type: none"> › My Land, My Home <ul style="list-style-type: none"> » Housing programme › Habitat Santa Fe › Safe Water and Electricity › Land Titling and Regularization › Historic Restitution of the Territory › Building citizenship: Aleros de Santa Fe

L3 DEVELOPMENT ECONOMICS

SANTA FE UNDERTAKES AND PRODUCES
<ul style="list-style-type: none"> › Promotion and Consolidation of Value Chains <ul style="list-style-type: none"> » Dairy development » Livestock development » Santa Fe Forest Operating Centre » Development of fruit and vegetable production systems » Fish fauna development and fish farming system › Santa Fe Extension Network › Santa Fe Exports Value › Social Economy › Tourism Management System <ul style="list-style-type: none"> » Provincial Route 1 riverside touristic corridor and historical tourism › Cultural Factories and Industries › Domestic Market Integration and Development <ul style="list-style-type: none"> » Regional Productive Platform » Wholesale Commercial and Logistics Park in the Metropolitan Area of Santa Fe - Sauce Viejo › Labour Observatory › Public System of Labour Mediation › Integrated Policy of Fishery Resources › Promotion and Financing Tools of Development
INTEGRATION OF PRODUCTION, SCIENCE AND TECHNOLOGY
<ul style="list-style-type: none"> › Santa Fe Innovates: R+D+i Integration (Research, Development and Innovation) <ul style="list-style-type: none"> » Consolidation of the Regional Industrial Science Pole › Provincial Agency of Science, Technology and Innovation › Santa Fe Undertakes › Regional Hallmark: Designation of Origin
ENERGY FOR SOCIAL AND PRODUCTIVE DEVELOPMENT
<ul style="list-style-type: none"> › Integrated Development of the Electric Power System <ul style="list-style-type: none"> » Construction of Thermal Power Plant in Sauce Viejo and expansion of transport network › Cogeneration of Energy › Gas Network System › Generation of Alternative Energies <ul style="list-style-type: none"> » Alternative and renewable energy systems › Wind Resource Assessment <ul style="list-style-type: none"> » Wind turbine for Santa Fe Port › Integral Management of Used Vegetable Oils › Generation of Biogas › Solar Energy Exploitation › Water Energy Supply in Plain Rivers <ul style="list-style-type: none"> » Small hydrological exploitations - Arroyo Leyes
NETWORKS FOR TERRITORIAL DEVELOPMENT
<ul style="list-style-type: none"> › Consolidation of Public-Private Territorial Associations › Promotion of Associativism, Cooperativism and Entrepreneurship <ul style="list-style-type: none"> » Consolidation of Regional Development Agencies and Associations › Promotion of Corporate Social Responsibility › Fiscal Control of Cooperative Entities and Mutual Associations › Promotion of Intermunicipal Associations <ul style="list-style-type: none"> » Consolidation of the Metropolitan Area of Greater Santa Fe



Region 3
Santa Fe Node

L1 INTEGRATED TERRITORY

SANTA FE, ACCESSIBLE AND CONNECTED
› Road Infrastructure
› National Route 33 carriageway
› National Route 34 carriageway
› Rosario Ring road plan
› North - South regional corridor National Route 178 - Provincial Route 13
› Provincial Route 26 regional ring road
› Consolidation of Provincial Route 90
› Consolidation of provincial road network
› Consolidation of motorways Rosario - Buenos Aires and Santa Fe - Rosario
› Tertiary Road Network
› Port and Fluvial Development
› Port and logistics development master plan - Rosario
› Villa Constitución Port master plan
› Railway Restructuring
› Railway restructuring in the metropolitan area of Rosario and the region
› Commercial Air Activity and Airport System
› Reactivation of freight flow in Rosario International Airport "Islas Malvinas"
› Santa Fe and the Waterway
› Multimodal Transport System
› Integral plan of inter-city transport for the metropolitan area of Rosario
› Communication Technologies
› Santa Fe Radio and Television
› Santa Fe Signal

TERRITORIAL PLANNING AND ORGANIZATION

- › **Urban Planning and Land Policies**
- › **Environmental and Productive Territorial Planning**
- › **Territorial Hydrological Planning**
- › **Land Bank**
- › **IDESF Geographic Information System**

ENVIRONMENTAL QUALITY

- › **Sanitation Master Plan**
- › **Integral Management of Urban Solid Waste**
- › **Management of Protected Flora, Fauna and Natural Areas**
- › Management plan of islands and delta
- › **Effluent Control and Surface Course Sanitation**
- › Recovery plan of Saladillo Stream
- › Recovery plan of Frías Stream
- › Sanitation of Ludueña Stream, Pavón Stream and secondary canals
- › **Control of the Use of Phytosanitary Products**
- › **Cleaner Production**
- › **Electronic Waste Treatment**
- › **Facilitators and People Responsible of the Environment**

CLOSE AND MODERN STATE

- › **Regionalization**
- › Rosario Node Civic Centre - School of Citizen Participation
- › **Decentralization Master Plan**
- › Citizen Service Centre - Region 4 Civic Centre
- › **Policies for the Integral Management of Public Officers**
- › **Modernization of the Technological Infrastructure**
- › **Electronic Citizen Service and Government**
- › **Innovation Technologies in Public Administration**
- › **Integration and Digitizing of General Registries**
- › **Implementation Framework for the Use of Free Technologies**
- › **Communication Within Reach of Citizens**
- › **Development of Local Autonomies**

REGIONAL AND INTERNATIONAL PROJECTION

- › **Regional Integration: Central Region**
- › **Regional Integration: CRECENEA - CODESUL- MERCOSUR**
- › **International Networks and Cooperation**
- › Internationalization of R+D+i (Research, Development and Innovation)
- › Fairground in Rosario
- › **Inclusion of Agro-Energy in the Agro-Economic Hubs of Brazil and Argentina**

L2 SOCIAL QUALITY

EQUITY IN HEALTH AND EDUCATION
› High Quality Public Education
› The ideal place for interacting and learning
› Schools of Arts
› Public Libraries
› Integrated Health System
› New Southern Regional Hospital - Rosario
› New Centenary Provincial Hospital - Rosario
› Construction of Health Centres
› Health Emergency System
› Technology Innovation in Public Health
› Health Promotion
› Public Production of Medicines
› Integral Health Policies. Sociosubjective Approach
› Food Safety and Sovereignty

TERRITORY AND CITIZENSHIP

- › **Building Gender Equality**
- › **Children's Province**
- › **Youth's Territory**
- › **Elderly Well Being Minded Inclusion**
- › **Accessibility for People with Disabilities**
- › **Sports Development**
- › **Provincial Network of Inclusive Plant Nurseries**
- › **Cultural Buildings and Spaces**
- › Territory for meetings
- › "El Lucero" Cultural Workshop. Childhood in motion
- › Memoirs, museums and archaeological sites - Sancti Spiritu
- › Music Port
- › Youth's City
- › **Itinerant Programmes**
- › Willing, Believing, Creating: cultures in motion
- › **Social Appropriation of Science, Technology and Innovation**

COEXISTENCE, JUSTICE AND SECURITY

- › **Safe Territory and Communities**
- › **Proper and Inclusive Work**
- › Equal labour opportunities and treatment for natives
- › **Public Health Strategies for the Prevention of Child and Teenage Labour**
- › **Reform of the Legal System**
- › Regional Centre of Criminal Justice in Rosario
- › Regional Offices of Justice
- › Legal Assistance Centre
- › Closed establishment for Juvenile Criminal Justice
- › **Dejudicialization of Interpersonal Conflicts**
- › **Prevention Policies in Security**
- › **Modernization of the Structure of the Police Force**
- › **New Model of the Correctional System**
- › Region 4 correctional system
- › **Road Safety Agency**
- › **Technologies Applied to Citizen Security**

WATER AS A RIGHT AND AN OPPORTUNITY

- › **Drinking Water Supply System**
- › Water lines Central Santa Fe, Riverside, Greater Rosario and Southern Santa Fe
- › **Integral Management of Water Resources**
- › **Drainage and Retention Programme**
- › **Assessment Programme and Water Risk Control**
- › **Water Regional Observatory**

HABITAT FOR INCLUSION

- › **My Land, My Home**
- › Housing programme
- › **Habitat Santa Fe**
- › Integral intervention in neighbourhoods - Region 4
- › **Safe Water and Electricity**
- › **Land Titling and Regularization**
- › **Historic Restitution of the Territory**
- › Urban replanning special plan - ex Batallón 121

L3 DEVELOPMENT ECONOMICS

SANTA FE UNDERTAKES AND PRODUCES
› Promotion and Consolidation of Value Chains
› Heavy engineering industry
› Fish fauna development and fish farming system
› Santa Fe Extension Network
› Santa Fe Exports Value
› Social Economy
› Tourism Management System
› Tourism promotion and development
› Cultural Factories and Industries
› Domestic Market Integration and Development
› Rosario Metropolitan Logistics Centre
› Regional Productive Platform
› Labour Observatory
› Public System of Labour Mediation
› Integrated Policy of Fishery Resources
› Promotion and Financing Tools of Development
› Promotion of alternative and differential products

INTEGRATION OF PRODUCTION, SCIENCE AND TECHNOLOGY

- › **Santa Fe Innovates: R+D+i Integration (Research, Development and Innovation)**
- › Consolidation of the Regional Industrial Science Pole
- › Rosario Aquarium
- › Technological area Rosario Node
- › **Provincial Agency of Science, Technology and Innovation**
- › **Santa Fe Undertakes**
- › **Regional Hallmark: Designation of Origin**

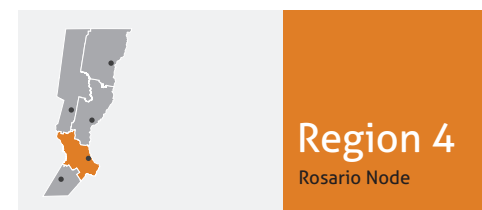
ENERGY FOR SOCIAL AND PRODUCTIVE DEVELOPMENT

- › **Integrated Development of the Electric Power System**
- › Expansion of the sub-transmission and distribution network
- › **Cogeneration of Energy**
- › **Gas Network System**
- › **Generation of Alternative Energies**
- › Production of biofuel
- › **Wind Resource Assessment**
- › Wind energy generation park
- › **Public Health Strategies of Used Vegetable Oils**
- › **Generation of Biogas**
- › Generation of biogas - Casilda and Cañada de Gómez
- › **Solar Energy Exploitation**
- › Solar energy in urban areas
- › **Water Energy Supply in Plain Rivers**
- › Small hydrological exploitations - Rosario y Carcarañá

NETWORKS FOR TERRITORIAL DEVELOPMENT

- › **Consolidation of Public-Private Territorial Associations**
- › **Promotion of Associativism, Cooperativism and Entrepreneurship**
- › Consolidation of Regional Development Agencies and Associations
- › **Promotion of Corporate Social Responsibility**
- › **Fiscal Control of Cooperative Entities and Mutual Associations**
- › **Promotion of Intermunicipal Associations**
- › Consolidation of the Metropolitan Area of Greater Rosario

- › **Provincial project**
- › Regional project



L1 INTEGRATED TERRITORY

SANTA FE, ACCESSIBLE AND CONNECTED
› Road Infrastructure
› National Route 33 carriageway
› Consolidation of National Route 8
› Consolidation of Provincial Route 90
› Consolidation of provincial road network
› Tertiary Road Network
› Port and Fluvial Development
› Railway Restructuring
› Commercial Air Activity and Airport System
› Dynamizing and development of Venado Tuerto Airport
› Santa Fe and the Waterway
› Multimodal Transport System
› Communication Technologies
› Santa Fe Radio and Television
› Santa Fe Signal

TERRITORIAL PLANNING AND ORGANIZATION

- › **Urban Planning and Land Policies**
- › **Environmental and Productive Territorial Planning**
- › **Territorial Hydrological Planning**
- › **Land Bank**
- › **IDESF Geographic Information System**

ENVIRONMENTAL QUALITY

- › **Sanitation Master Plan**
- › **Integral Management of Urban Solid Waste**
- › **Management of Protected Flora, Fauna and Natural Areas**
- › Management, planning and handling of RAMSAR Melincué Lagoon site
- › Low-lying pampa lagoon system
- › **Effluent Control and Surface Course Sanitation**
- › Recovery plan of Saladillo Stream
- › **Control of the Use of Phytosanitary Products**
- › **Cleaner Production**
- › **Electronic Waste Treatment**
- › **Facilitators and People Responsible of the Environment**

CLOSE AND MODERN STATE

- › **Regionalization**
- › Venado Tuerto Node Civic Centre - School of Urbanism
- › **Decentralization Master Plan**
- › Citizen Service Centre - Region 5 Civic Centre
- › **Policies for the Integral Management of Public Officers**
- › **Modernization of the Technological Infrastructure**
- › **Electronic Citizen Service and Government**
- › **Innovation Technologies in Public Administration**
- › **Integration and Digitizing of General Registries**
- › Creation of General Registry
- › **Implementation Framework for the Use of Free Technologies**
- › **Communication Within Reach of Citizens**
- › **Development of Local Autonomies**

REGIONAL AND INTERNATIONAL PROJECTION

- › **Regional Integration: Central Region**
- › **Regional Integration: CRECENEA - CODESUL- MERCOSUR**
- › **International Networks and Cooperation**
- › Promotion of the international integration of the region
- › **Inclusion of Agro-Energy in the Agro-Economic Hubs of Brazil and Argentina**

- › **Provincial project**
- › Regional project

L2 SOCIAL QUALITY

EQUITY IN HEALTH AND EDUCATION
› High Quality Public Education
› The ideal place for interacting and learning
› Schools of Arts
› Public Libraries
› Integrated Health System
› Construction of Regional Hospital - Venado Tuerto
› Construction of Health Centres
› Health Emergency System
› Technology Innovation in Public Health
› Health Promotion
› Public Production of Medicines
› Integral Health Policies. Sociosubjective Approach
› Food Safety and Sovereignty

TERRITORY AND CITIZENSHIP

- › **Building Gender Equality**
- › **Children's Province**
- › **Youth's Territory**
- › **Elderly Well Being Minded Inclusion**
- › **Accessibility for People with Disabilities**
- › **Sports Development**
- › **Provincial Network of Inclusive Plant Nurseries**
- › **Cultural Buildings and Spaces**
- › Territory for meetings
- › "El Lucero" Cultural Workshop. Childhood in motion
- › Memoirs, museums and archaeological sites
- › La Redondita "Art and Daily Life" cultural factory - Venado Tuerto
- › **Itinerant Programmes**
- › Willing, Believing, Creating: cultures in motion
- › **Social Appropriation of Science, Technology and Innovation**

COEXISTENCE, JUSTICE AND SECURITY

- › **Safe Territory and Communities**
- › **Proper and Inclusive Work**
- › **Public Health Strategies for the Prevention of Child and Teenage Labour**
- › **Reform of the Legal System**
- › Regional Centre of Criminal Justice
- › Regional Offices of Justice
- › Legal Assistance Centre
- › **Dejudicialization of Interpersonal Conflicts**
- › **Prevention Policies in Security**
- › **Modernization of the Structure of the Police Force**
- › **New Model of the Correctional System**
- › Region 5 correctional system
- › **Road Safety Agency**
- › **Technologies Applied to Citizen Security**

WATER AS A RIGHT AND AN OPPORTUNITY

- › **Drinking Water Supply System**
- › Water lines Riverside and Southern Santa Fe
- › **Integral Management of Water Resources**
- › Water regulation of lagoons
- › **Drainage and Retention Programme**
- › **Assessment Programme and Water Risk Control**
- › **Water Regional Observatory**

HABITAT FOR INCLUSION

- › **My Land, My Home**
- › Housing programme
- › **Habitat Santa Fe**
- › **Safe Water and Electricity**
- › **Land Titling and Regularization**
- › **Historic Restitution of the Territory**

L3 DEVELOPMENT ECONOMICS

SANTA FE UNDERTAKES AND PRODUCES
› Promotion and Consolidation of Value Chains
› Forest development
› Livestock development
› Santa Fe Extension Network
› Santa Fe Exports Value
› Social Economy
› Tourism Management System
› Cultural Factories and Industries
› Domestic Market Integration and Development
› Regional Productive Platform
› Labour Observatory
› Public System of Labour Mediation
› Integrated Policy of Fishery Resources
› Promotion and Financing Tools of Development
› Promotion of alternative and differential products

INTEGRATION OF PRODUCTION, SCIENCE AND TECHNOLOGY

- › **Santa Fe Innovates: R+D+i Integration (Research, Development and Innovation)**
- › Provincial Agency of Science, Technology and Innovation
- › **Santa Fe Undertakes**
- › **Regional Hallmark: Designation of Origin**

ENERGY FOR SOCIAL AND PRODUCTIVE DEVELOPMENT

- › **Integrated Development of the Electric Power System**
- › Expansion of the sub-transmission and distribution network
- › **Cogeneration of Energy**
- › Southern province pipeline
- › **Gas Network System**
- › **Generation of Alternative Energies**
- › **Wind Resource Assessment**
- › Wind energy generation park
- › **Integral Management of Used Vegetable Oils**
- › **Generation of Biogas**
- › Biogas for agricultural ventures
- › **Solar Energy Exploitation**
- › **Water Energy Supply in Plain Rivers**

NETWORKS FOR TERRITORIAL DEVELOPMENT

- › **Consolidation of Public-Private Territorial Associations**
- › **Promotion of Associativism, Cooperativism and Entrepreneurship**
- › Consolidation of Regional Development Agencies and Associations
- › **Promotion of Corporate Social Responsibility**
- › **Fiscal Control of Cooperative Entities and Mutual Associations**
- › **Promotion of Intermunicipal Associations**





Progresses in the Territory

(2008–2012)

Below, we introduce the main progresses of strategic projects in the territory. We continue advancing towards a more equitable, supportive, inclusive and balanced Province.

Santa Fe, Accessible and Connected



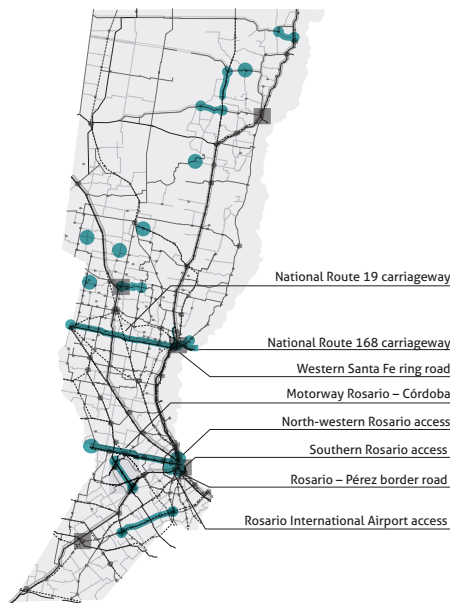
North-western Rosario access



National Route 19. Santa Fe - San Francisco (Córdoba)



Motorway Rosario - Córdoba



Close and Modern State

5
CIVIC CENTRES
IN SERVICE

Civic Centre, Region 1 - Reconquista Node



Civic Centre, Region 4 - Rosario Node



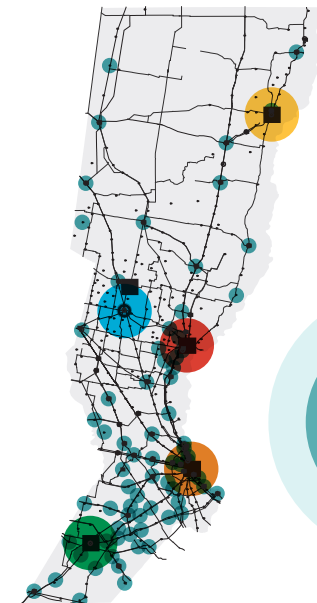
Civic Centre, Region 5 - Venado Tuerto Node



Civic Centre, Region 2 - Rafaela Node



Civic Centre, Region 3 - Santa Fe Node



82
CONNECTED DRIVING
LICENCE ISSUING CENTRES

312.000
RENEWALS

153.000
NEW LICENCES



Santa Fe Data Processing Centre

40.000
DELIVERED BIRTH
CERTIFICATES

511
ONLINE PROCEDURES
MORE THAN 27,000
DAILY ENTRIES

420.000
CIVIL REGISTRY
TURNS

55.000
DELIVERED HALF-PRICE
BUS CARDS

Integrated Health System

Venado Tuerto Hospital



Iturraspe Hospital - Santa Fe



DIPAES Emergency Centre - Avellaneda
(Accidentology and Health Emergency Department)



Outpatient Medical Specialties Centre - Santa Fe (CEMAFE)



Las Toscas Hospital



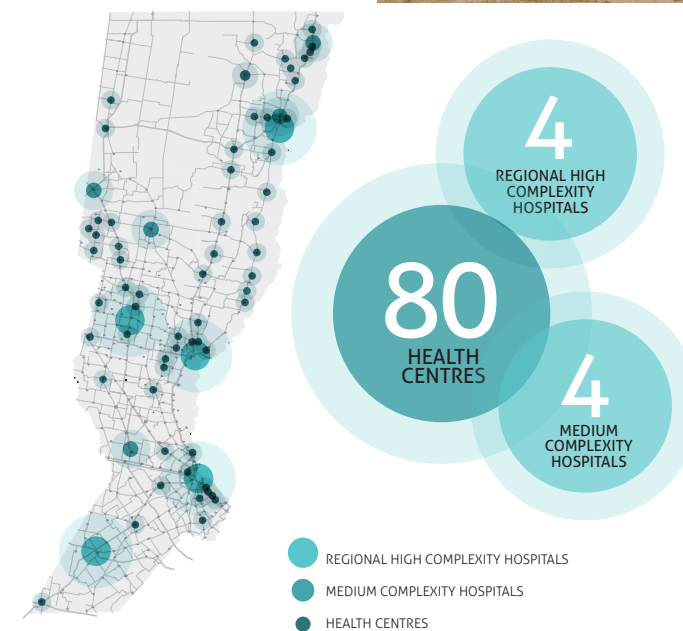
Reconquista Hospital



Ceres Hospital



Las Parejas Hospital



Health Centre La Plata, Rosario



Southern Rosario Hospital

High Quality Public Education

39
NEW EDUCATIONAL BUILDINGS



Technical School No. 508 - Santa Fe



Kindergarten No. 192 - Ceres



Secondary School - Reconquista



Kindergarten No. 98 - Esperanza



Kindergarten No. 192 - Ceres



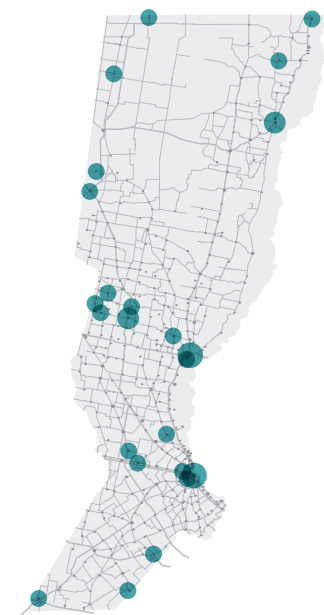
Technical School No. 407 - Rosario



Kindergarten No. 121 - Wheelwright



Kindergarten No. 50 - Rufino



11675
TEACHERS IN CONTINUOUS TRAINING

301
SATELLITE DISHES
IN SCHOOLS

3573
EDUCATIONAL FACILITIES
CONNECTED TO THE
PROVINCIAL NETWORK

Drinking Water Supply System



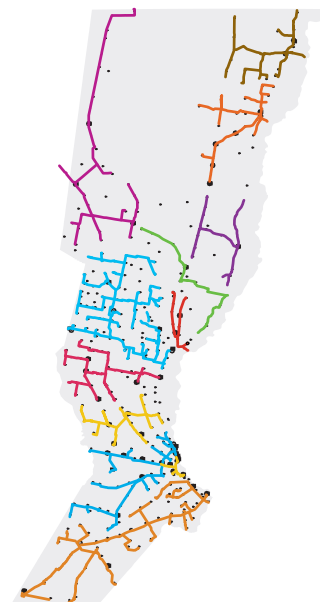
Desvío Arijón water line



West-central water line (National Fund)



Greater Rosario water line



12
WATER LINES
IN PROGRESS

Habitat for Inclusion



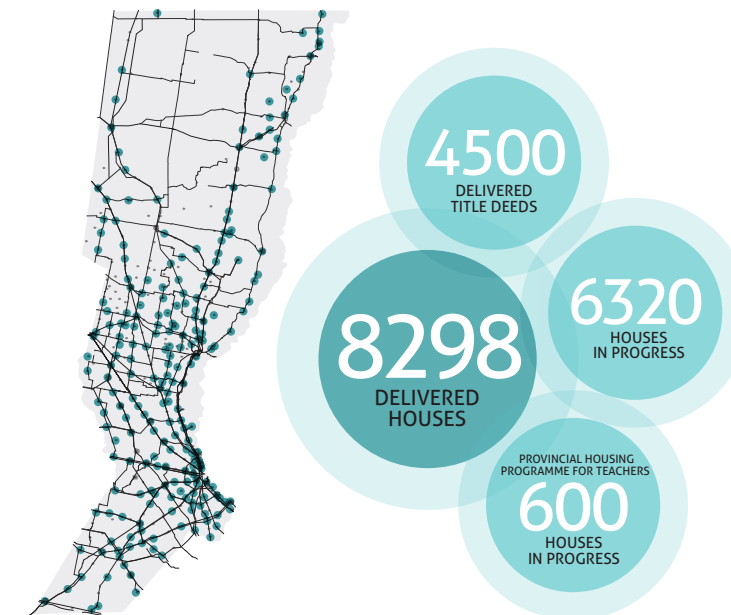
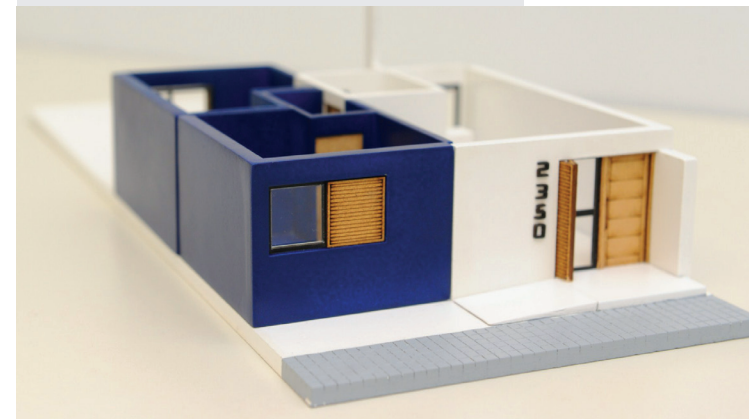
"My Land, My Home"

Urbanized lots:

- » Ibarlucea Housing Park: 1,400 plots
- » Avellaneda Housing Park - Rosario: 600 plots
- » Rafaela: 600 plots

Cooperation agreements on habitat policies with municipalities and communes

Design of an universal and flexible housing model



Universal Access to Cultural Goods

Imagination triptych
City of Santa Fe



La Redonda "Art and Daily Life"

Space for urban culture and artistic expressions. Permanent exhibition of López Claro and Favaretto Forner works of art.



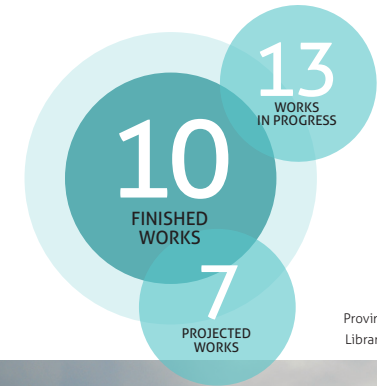
Bright Corner

A social coexistence multipurpose space for all ages and seasons of the year. A new social, cultural and sports venue.

Franchino Mill "Cultural Factory"

School of Arts and Crafts. Multipurpose cultural space for teaching and exhibition activities as well as the manufacturing of design products.

Recovery of Heritage Sites Programme



Waldensian Evangelical Church - San Carlos Sur



Spanish Theatre - Reconquista



San Antonio Chapel - Santa Rosa de Calchines



Provincial History Library - Santa Fe



Cultural Centre - Santa Fe



Lavarden Platform - Rosario



Chimney of La Forestal former factory - Villa Ocampo

Coexistence, Justice and Security



Centre of Criminal Justice - Rosario



Police Station - Santo Tomé



Community Open Centre - Venado Tuerto



9
POLICE STATIONS
(FINISHED AND
IN PROGRESS)

25
POLICE STATION
RENOVATIONS

5000
INCORPORATED
SECURITY AGENTS

911
EMERGENCY
CENTRES

1600
NEW MOBILE
UNITS

Santa Fe Undertakes and Produces

19
VALUE
CHAINS

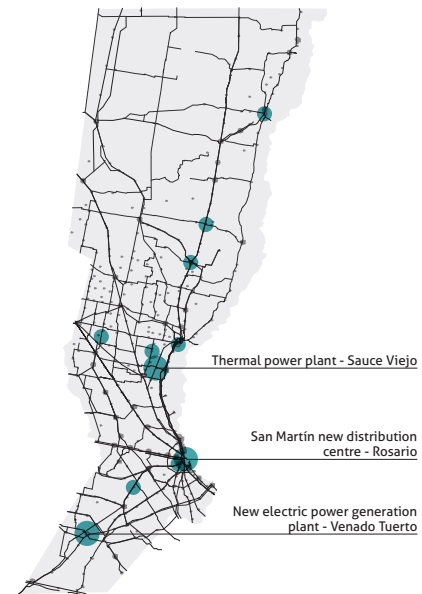


Cotton, Apiculture, Auto parts, Footwear, Beef, Pork, Sheep, Goat, Coachbuilding, The River and its Resources, Forestry, Fruit and Vegetable, Dairy Industry, Agricultural Equipment, Food Industry Equipment, Software and Computer Services, Sugar-Alcohol Industry, Urban Tourism, Arts and Events, River Side Tourism and Inland Tourism.

Energy for Social and Productive Development



Santa Fe Port transformer station



AUTHORITIES

Governor of the Province of Santa Fe
Antonio Bonfatti

Lieutenant Governor of the Province of Santa Fe
Jorge Henn

Minister of Government and State Reform
Rubén Galassi

Minister of Justice and Human Rights
Juan Lewis

Minister of Public Safety
Raúl Lamberto

Minister of Economy
Ángel Sciarra

Minister of Production
Carlos Fascendini

Minister of Health
Miguel Ángel Cappelletto

Minister of Labour and Social Safety
Julio Genesini

Minister of Social Development
Mónica Bifarello

Minister of Public Works and Housing
Julio Schneider

Minister of Water, Public Services and Environment
Antonio Ciancio

Minister of Education
Claudia Balagué

Minister of Innovation and Culture
María de los Ángeles González

Secretary of State for Science, Technology and Innovation
David Asteggiano

Secretary of State for Habitat
Gustavo Leone

Secretary of State for Energy
Luis Krapf

Director of Public Prosecutions
Pablo Saccone

SECRETARY'S OFFICE FOR REGIONS, MUNICIPALITIES AND COMMUNES

Secretary
Horacio Ghirardi

Deputy Secretary of Coordination and Territorial Management
Alejandra Dupuoy

Deputy Secretary of Planning and Decentralization
Maria Paz Gutiérrez

Provincial Director of Interministerial Coordination
Luis Cingolani

Provincial Director of Regionalization and Decentralization
Eleonora Pizarro

Provincial Director of Territorial Strategic Planning
Leticia Leonhardt

Regional Coordinators
Oswaldo Fatala – Region 1, Reconquista Node
Natalia Enrico – Region 2, Rafaela Node
Carlos Suárez – Region 3, Santa Fe Node
María Pía Zelayeta – Region 4, Rosario Node
Oscar Pieroni – Region 5, Venado Tuerto Node

STAFF

General Coordination
Rubén Galassi

Executive Coordination
Horacio Ghirardi

Technical Coordination
Maria Paz Gutiérrez

Operational Coordination
Leticia Leonhardt

Editorial Staff
Valeria Ávila
Mariana Haedo
María Margarita Norman
Verónica Mingarini

External Contribution
Marianela Motkoski

Technical Assistance
María Alejandra Bertós
José Citroni
Elina Degli Esposti
Natalia Díaz
Francisco Gelabert
Facundo Liscio
César López
Gustavo Preti
Verónica Rippa
Analía Wüst

English Translation
María Cecilia Chiappini
Mariana Gozzarelli

This document has been produced with the valuable contribution of the technical staff of all Ministries and Secretary of State's Offices of the Government of the Province of Santa Fe represented by the members of the Interministerial Committee for Strategic Planning and Decentralization (Decree No. 1018/12).

The content of this document is the exclusive responsibility of the Government of the Province of Santa Fe and should not in any way be considered a reflection of the position held by the European Union.

The complete version of the Provincial Strategic Plan Vision 2030 is available in Spanish at:
www.santafe.gov.ar/index.php/plan_estrategico_provincial

PROVINCIAL STRATEGIC PLAN | Vision 2030
POCKET VERSION



urb-al III
Innovación institucional - P. Santa Fe (AR)

